

**SINGLE SPHERE EPDM - TIED FLANGED VARIOUS LENGTH**

**TYPE :**

**TRB/16/132**

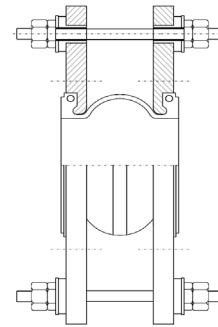
**DESIGN CONDITIONS**

Max. working pressure\* 16 Bar.g  
 Burst Pressure\* >50 Bar.g  
 Vacuum Rating\* 700mm HG  
 Temperature Range -10 to 90°C  
 Test Pressure\* 24 Bar.g  
 Design Life 10 Years

\*at ambient temperature

**CONSTRUCTION MATERIALS**

Bellows (outer) EPDM, hot water resistant  
 Bellows (inner) EPDM, ozone proof, warmth resistant  
 Reinforcement High tensile synthetic fabric  
 Flanges Carbon steel, zinc plated  
 Tie bars High tensile carbon steel, zinc plated  
 Top Hat Washers EPDM rubber, warmth resistant



**UNIT IDENTIFICATION:**

Manufacturer, Size, Elastomer, Date Stamp, Type No.

**SPECIFICATION**

*Thermosel* type TRB/16/132 single sphere EPDM rubber bellows. EPDM rubber membrane with high tensile synthetic reinforcement and steel wire reinforced faces. Unit supplied with zinc plated carbon steel flanges drilled to BS10 Table E fitted with adjustable tie-bar assembly, seated on noise absorbing rubber top hat washers. Other drillings available on request.

**TECHNICAL DATA**

NOMINAL SIZE	PART NUMBER	NEUTRAL LENGTH	AXIAL COMPRESSION	AXIAL ELONGATION	LATERAL DEFLECTION	ANGULAR DEFLECTION
mm	TRB/____/16/132	mm	mm	mm	+/- mm	+/- Deg
32	TRB/0032/16/132	93	8	15	8	2
40	TRB/0040/16/132	93	8	15	8	2
50	TRB/0050/16/132	99	8	15	8	2
65	TRB/0065/16/132	108	10	15	12	2
80	TRB/0080/16/132	116	10	15	12	2
100	TRB/0100/16/132	129	12	15	12	2
125	TRB/0125/16/132	142	12	15	16	2
150	TRB/0150/16/132	156	12	15	16	2
200	TRB/0200/16/132	177	18	15	20	2
250	TRB/0250/16/132	206	18	15	20	2
300	TRB/0300/16/132	217	18	15	20	2

**TYPICAL APPLICATIONS**

*Thermosel* rubber bellows are used to absorb vibration and attenuate noise caused by reciprocation plant such as pumps, chillers and air handling units. They are also used to compensate for small amounts of axial, lateral and angular pipework movements. Suitable for use of chilled water and heating systems.

**GENERAL INFORMATION**

This range of expansion joints is comprised of an EPDM single sphere moulded bellows having carbon steel galvanised flanges which are free to rotate around the bellows axis. This feature facilitates installation and the construction ensures that all inner surfaces that contact the flow media, are EPDM rubber. **Not suitable** for drinking water, cooling water with oil containing additives, oily compressed air or permanent effect of steam.

Recommendations contained in our literature on correct installation of rubber expansion joints should be followed. These rubber bellows are restrained by means of tie-bars and therefore only require minimal guiding by intermediate anchors / guides. When operating at elevated temperatures the maximum operating pressure should be derated; refer to pressure / temperature chart. Vacuum rating is based on the unit being installed at its neutral length; the unit should not be extended on installation.

**ALTERNATIVES**

Where a TRB/16/132 is not suitable, please contact *Thermosel Solutions* to discuss the alternative options.

STANDARD PUMP FLEXIBLES